



Custom Potable Water and Wastewater Metal Tanks 2020

BI Pure Water Canada Inc. has considerable experience in designing and manufacturing custom tanks to meet client's specific needs. Welders are certified to CSA A660, CWB and ASME standards and quality is ensured through extensive Non Destructive Examination (NDE) and testing.

Structural engineering design ensures integrity under static, dynamic and seismic conditions. Metallurgical considerations are also considered, to ensure long term corrosion resistance. Coatings for carbon steel tanks are offered, preceded by thorough surface preparation to SSPC standards, with third party NACE inspection and testing available. NSF-61 certified coatings are available for potable water service.

Examples of tanks produced by BI Pure Water:



Fig. 1 - Stainless steel tank fabricated for Bend, Oregon MBR system.

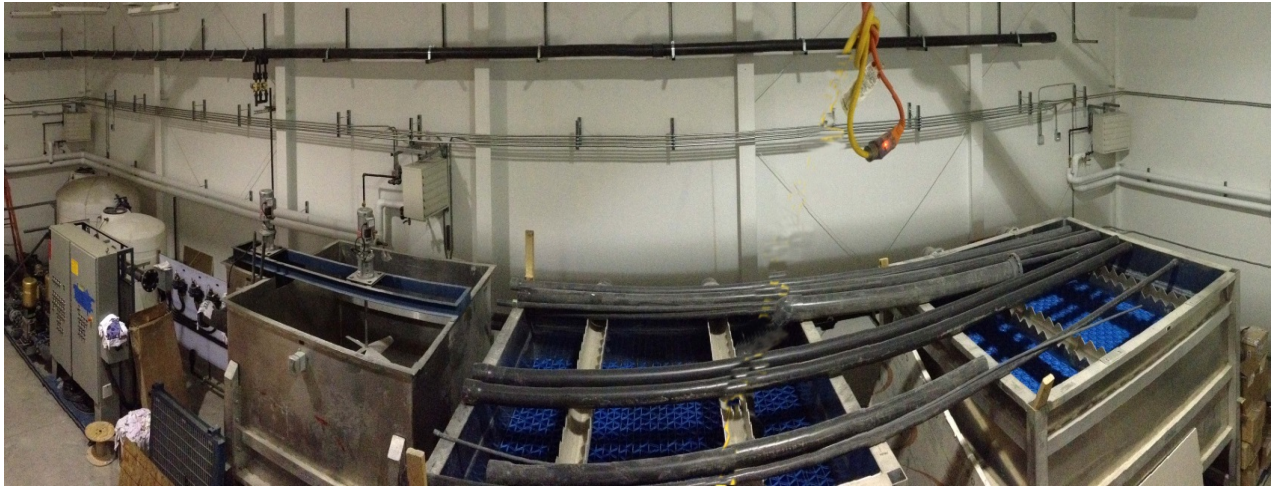


Fig. 2 - Aluminum coagulation–flocculation-sedimentation system, installed in Kugluktuk, Nunavut WTP.



Fig. 3 - Site erection and welding of a large potable water tank for Cambridge Bay, Nunavut.



Fig. 4 - 400 cubic meter bolted, insulated and clad potable water tank for Kitimat construction camp.

All tanks designed and manufactured by BI Pure Water begin with a 3D CAD drawing to verify details and gain approval from the client, before fabrication begins.

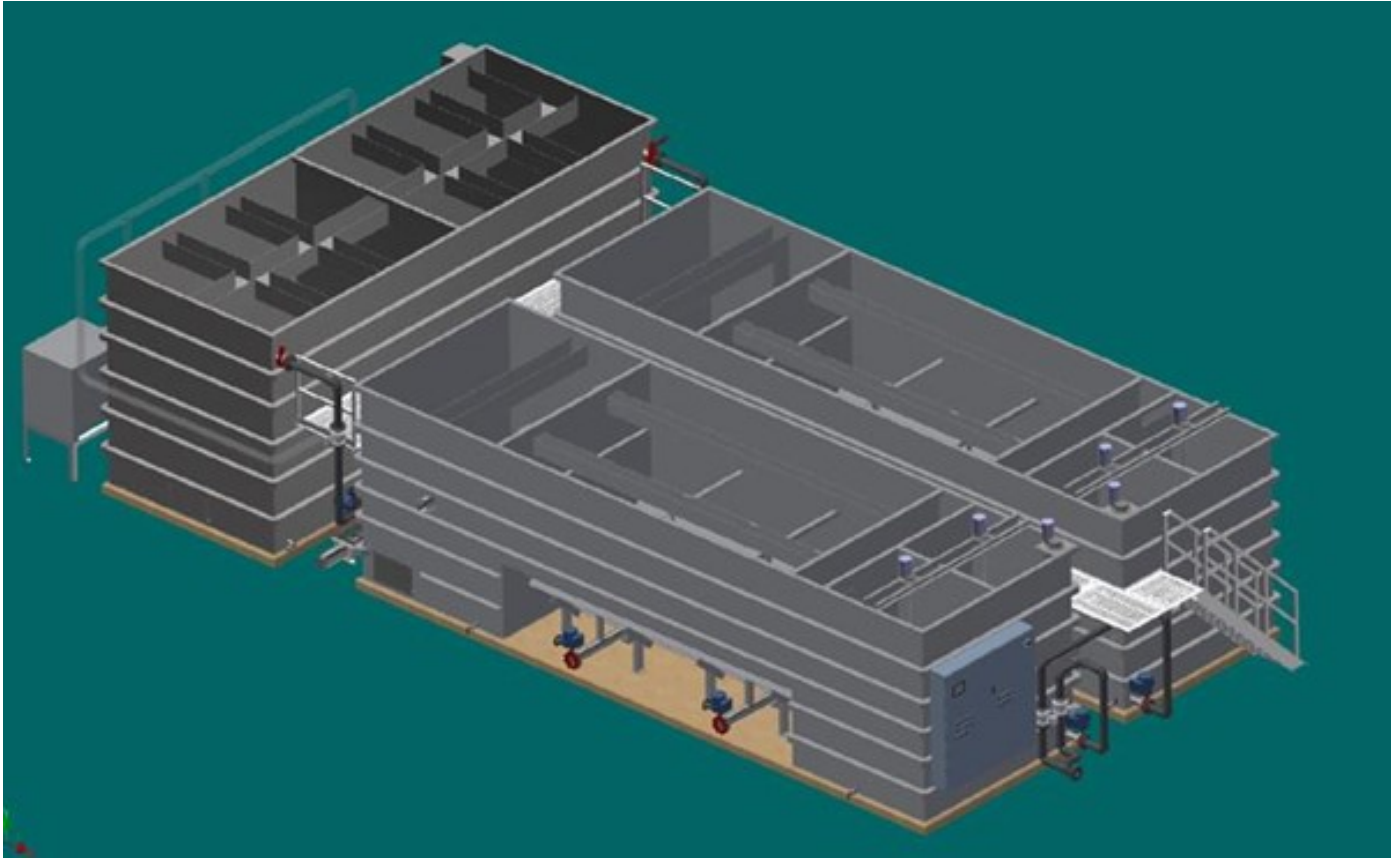


Fig. 5 – 3D rendering of a 316 stainless steel wastewater treatment system for an Ontario First Nations WTP.



Fig.6 – Cylindrical coated carbon steel tank for Interpipeline, Alberta.



Fig. 7 – 200 cubic meter insulated and clad coated carbon steel EQ tank loaded for transport.



Fig. 8 - Dual 60 cubic meter MBBR tanks housed within modular buildings

BI Pure Water has over 25 years of experience designing, fabricating, installing, commissioning and servicing custom water treatment systems. Our clients include municipalities, utilities, mining and industrial firms who have the highest standards of quality and reliability. Our systems are designed with safety, durability and ease of operation and maintenance in mind.

BIPW's quality plans, environmental considerations, design and 3D CAD drawings meet the unique requirements and standards of major corporations and utilities. This includes "Design for Resilience", taking into account seismic forces, flooding, extreme storms and other factors.

BI Pure Water specializes in reviewing water quality test results, analyzing customer needs and then prescribing the most cost-effective solution. BIPW engineers pilot, design, manufacture, install, start-up and commission package water treatment plants. Full factory testing included NDE, hydrostatic and operation under hydraulic flow conditions.

Contact BI Pure Water at 604 882-6650 or sales@bipurewater.com